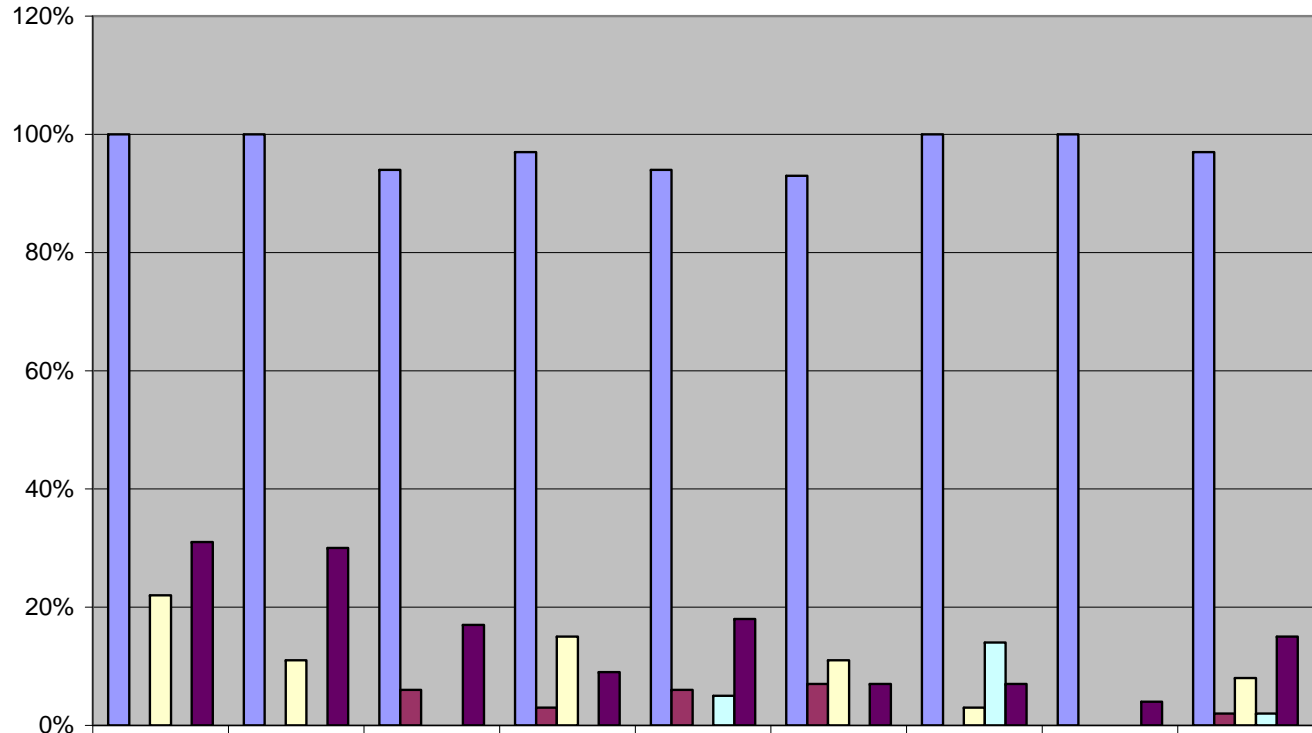


St. Pius Acceptance Rate



	2003	2004	2005	2006	2007	2008	2009	2010	Average
■ % Accepted	100%	100%	94%	97%	94%	93%	100%	100%	97%
■ % not accepted	0	0	6%	3%	6%	7%	0	0%	2%
■ % summer school English	22%	11%	0	15%	0	11%	3%	0%	8%
■ % summer school Math	0	0	0	0	5%	0	14%	0%	2%
■ % summer school English & Math 2010 Study Skills	31%	30%	17%	9%	18%	7%	7%	4%	15%